



CARLISLE LOCAL SCHOOLS

New PK-12

June 25th, 2018 | Update

Agenda

- Design update
- Important News
- Budget update
- Timeline



Architectural History in the New Building

1st Floor



History Walls through both entrances

2nd Floor



HIGH SCHOOL WING

MAIN HIGH SCHOOL ENTRY

AUDITORIUM

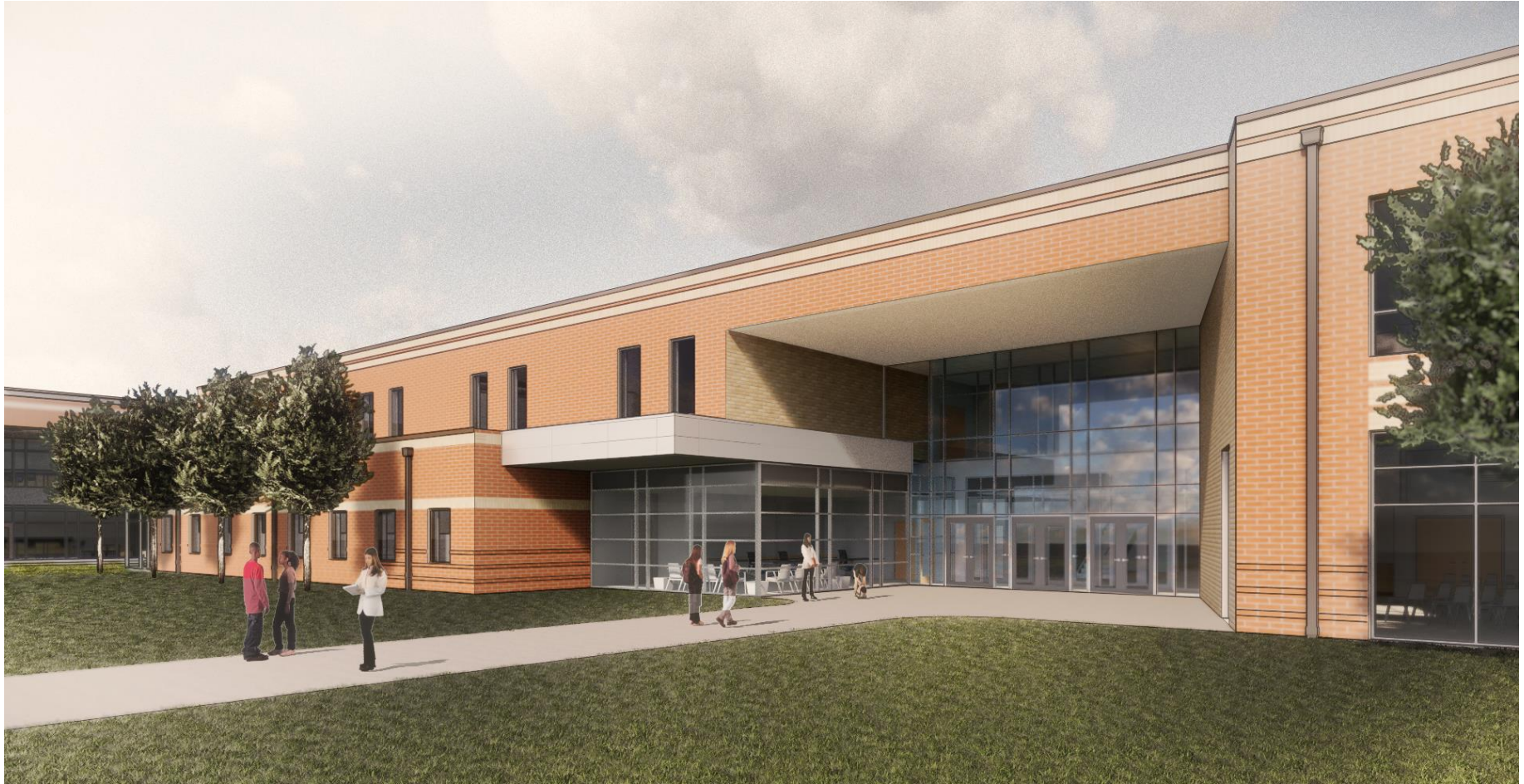
MIDDLE SCHOOL WING

HIGH SCHOOL
GYMNASIUM

MAIN ELEMENTARY SCHOOL ENTRY

ELEMENTARY SCHOOL WING





MAIN HIGH SCHOOL AND MIDDLE SCHOOL ENTRANCE



MAIN ELEMENTARY SCHOOL ENTRANCE



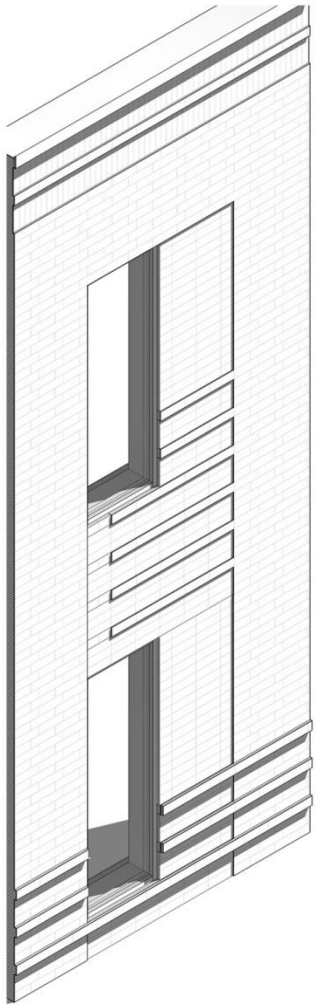
CONCOURSE TO STADIUM



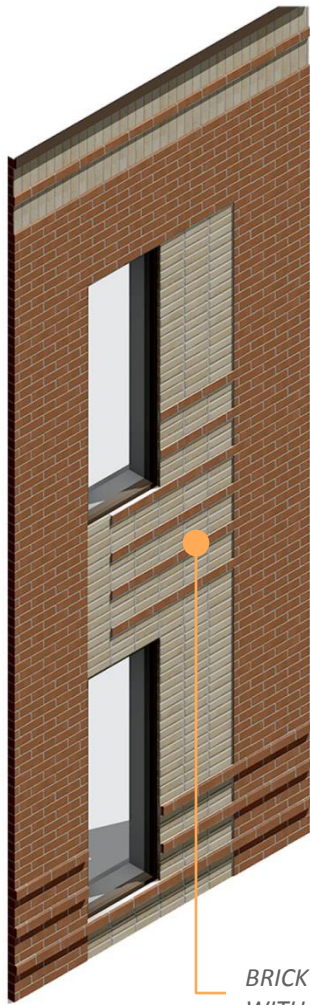
ELEMENTARY WING & EXTENDED LEARNING AREA



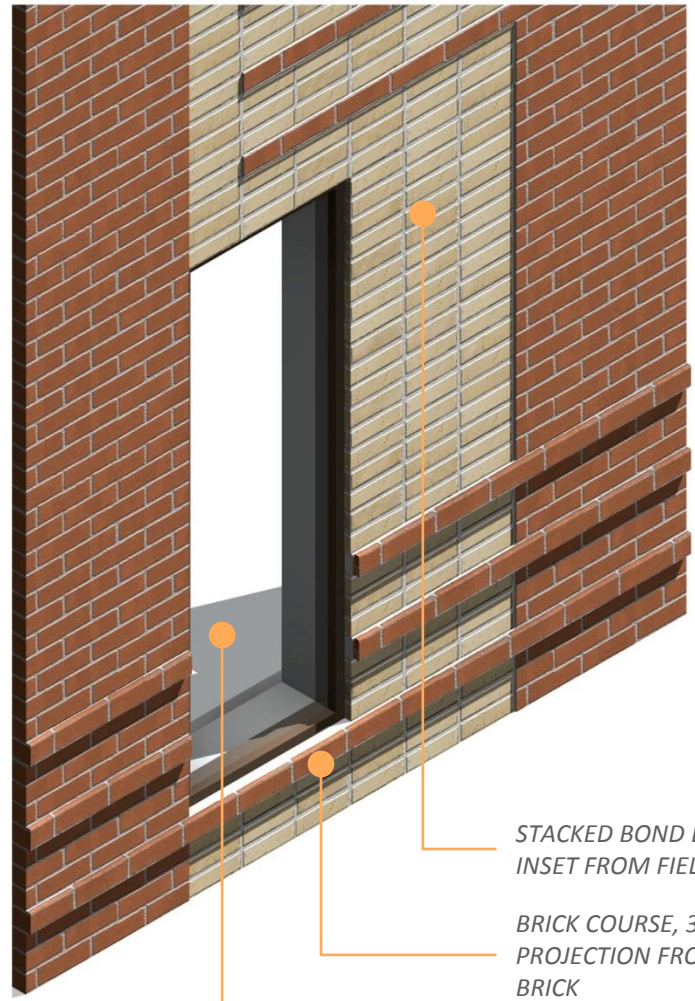
SOUTH CLASSROOM WING ELEVATION



**linework*



BRICK BANDS IN-PLANE WITH FIELD BRICK



STACKED BOND BRICK, 3/8" INSET FROM FIELD BRICK

BRICK COURSE, 3/8" PROJECTION FROM FIELD BRICK

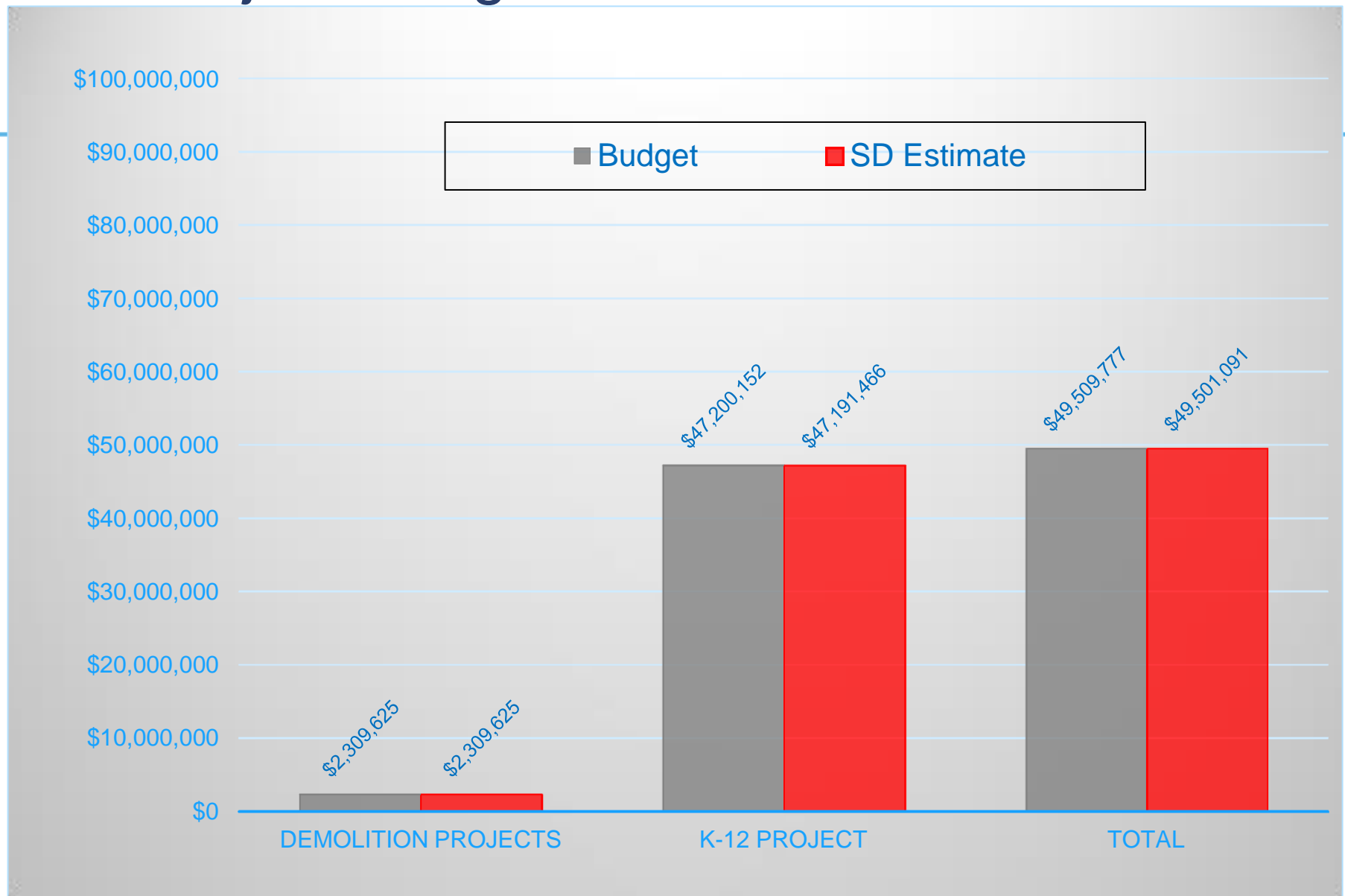
ALUMINUM WINDOW



Important News

- Schematic design deliverable for approval
 - On budget at schematic design
 - Design development is in progress
 - Pre planning, design collaboration, administrative input, site planning
 - Ground breaking in the fall 2018, when students return to school
- 

Project Budget



Timeline – New K-12 School

- Design development complete August 2018
- Early site GMP August 2018
- Start work August / September 2018
- Foundation package October 2018
- Construction documents October 2018
- Start building January 2018

Thank You Carlisle Local School District Community For Your Support

